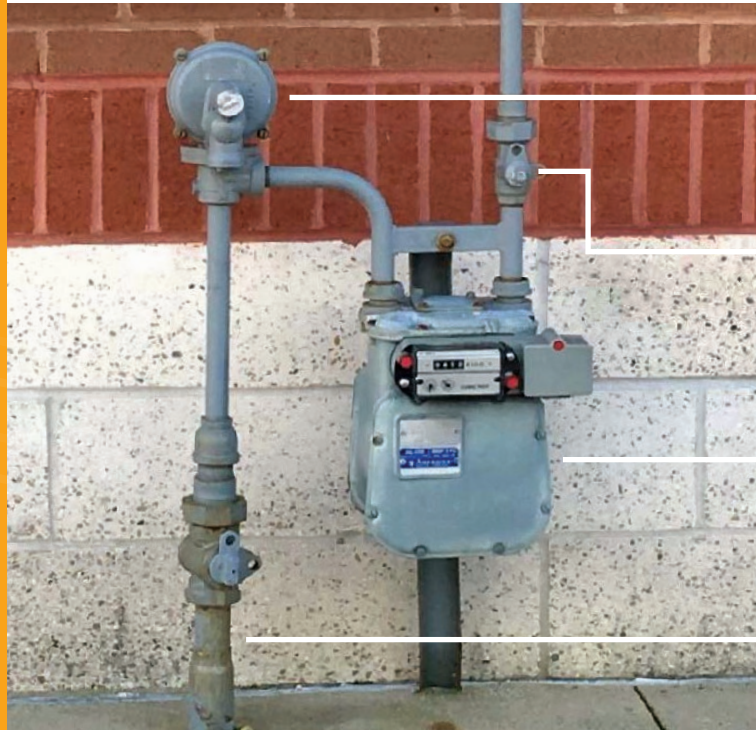


STAY ON THE SAFE SIDE OF NATURAL GAS.

OUTSIDE

BGE is committed to maintaining a safe and reliable gas system, which begins with helping our customers understand the importance of natural gas safety.

KNOW THE PARTS OF YOUR NATURAL GAS METER...



REGULATOR
Regulates gas pressure. Located between gas supply and meter.

POINT OF SERVICE VALVE
This should only be operated by a licensed gas fitter.

METER
Can be located inside or outside your home. Measures the flow of gas.

RISER
The pipe that comes from outside service line underground.



INTERIOR METER WITH A VENTED REGULATOR.

All inside meters with a regulator must have a vent leading to the outside.



EXTERIOR REGULATOR VENT

Allows a small amount of natural gas to be released outside. Designed to prevent high pressure gas from collecting inside. Do not block.



APPLIANCE VENTS

Gas appliances may have exhaust vents/air intake on the side or rear of the house. Keep 3 feet clear around vents.

...AND HOW TO STAY SAFE AROUND THEM.

- Do not touch or handle natural gas meters or equipment.
- Keep a three-foot radius of clear space around all gas equipment. Make sure it's easily accessible.
- Make sure all vents are clear from leaves, snow or anything that might block ventilation.
- Notify BGE if you detect gas equipment with any signs of rust or corrosion.
- If you have questions or concerns, contact BGE at **1.800.685.0123**.



An Exelon Company



Before any type of digging, **CALL 811** to have underground utilities marked and located.

NATURAL GAS IS SAFE, EFFICIENT AND RELIABLE WHEN USED PROPERLY.

Here are some tips for operating your gas appliances safely.

- Make sure the flame is blue on gas appliances. A yellow flame may be a sign that your burner isn't operating correctly.
- Never use your gas range for heating the room.
- Keep the area around your gas-burning appliances clear of items that could block air circulation.
- Keep combustible or burnable items such as cleaning fluids, glue, varnish, papers, curtains and rags away from gas appliances.
- In the winter, meter equipment should be free of snow and ice.
- Children should never play near gas appliances.
- Gas appliances should always be clean, maintained and periodically inspected. Follow the manufacturer's instructions.
- When renovating or performing demolition, stay clear of inside gas lines. Have a licensed gas fitter turn off the gas supply.

FOR SIGNS OF LEAKS:



USE YOUR NOSE

Gas is colorless, tasteless, and odorless in its natural state. Therefore, BGE puts mercaptan, a safety additive in natural gas to give it a rotten egg odor and make it easier to detect.



USE YOUR EARS

Listen for hissing, blowing or roaring sound of gas escaping.



USE YOUR EYES

Look for dirt being blown into the air, dead plants or grass in an otherwise green area, fire coming from the ground or water bubbling or being blown into the air.

AND IF YOU SHOULD EVER DETECT NATURAL GAS...

- Leave the area immediately.
- Do not use matches, turn anything on or off, even a cell phone.
- When you get to a safe place, report the gas smell by calling BGE at **800.685.0123**.
- Emergency gas calls are answered 24/7. A service person will respond quickly, free of charge.

STAY ON THE
**SAFE
SIDE**
OF NATURAL GAS.

INSIDE

BGE[®]

An Exelon Company