

Common Meter Obstructions:

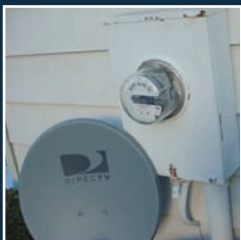
- Central air conditioning units
- Decks
- Walls (small closets encasing meters)
- Retaining walls
- Drainage pipes
- Concrete pads, brick pavers
- Decorative landscaping (fish ponds)



Deck Staircase Built Around Pedestal Meter Socket
(Meter Cannot be Removed)



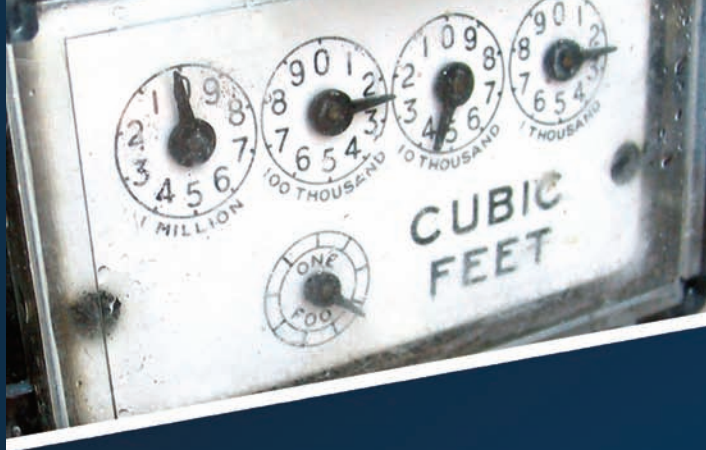
Looking Down on Meter Pedestal Drainage Pipe in Front of Pedestal
(Meter Cannot be Removed)



Satellite Dish Mounted Against Meter Socket
(Meter Cannot Be Removed)



Deck Built Over Top of Pedestal Meter



WORK SAFETY TIPS FROM BGE...
METER
OBSTRUCTION



Questions?
Please call 410-685-0123 or
1-800-685-0123

BGE

A Constellation Energy Company

METER OBSTRUCTIONS

Meter box obstructions can be much more serious than limiting access to our meter readers. Many customers do not realize that quick access to the meter may be critical in an emergency situation, and is essential to the proper maintenance of the meter. Obstructing access to the meter can also lead to disconnection of gas and/or electric service.

The Problem:

Customers, home improvement contractors and landscapers are inadvertently obstructing residential gas and electric metering assemblies while installing equipment or making home improvements. Usually, the meter can be read, but removing the meter for replacement, testing or maintenance is nearly impossible without damaging or reconfiguring property.



HVAC Unit in Front of Meter
(Meter Installation and Removal Extremely Difficult)

The Solution:

For safety, it's important to make sure the meter remains easy to reach. BGE must have access to the meter in order to read, test or maintain it; or remove and replace as necessary. We ask that you make certain there is a minimum of three (3) feet clear space around the meter box at all times. No permanent obstructions - such as trees, bushes, or walls - should be placed in front of the meter.

To avoid possible disconnection of your gas and/or electric service, it's important to make note of the following guidelines:

- Make sure meters are never obstructed by a permanent structure.
- Keep at least a 3-foot clearance around the meter.
- Make sure the meter is easy to access.
- Keep the area around the meter clear of weeds, flowers, bushes and debris.
- Even though certain meters may be read electronically, they still need to be kept free from obstructions that may interfere with receiving the electronic transmission.