



## Our Path to a Clean and Sustainable Future

At BGE, we are building on our history of supporting the environment by committing to cut our operational emissions by at least 50% by 2030. We will also achieve net-zero operations-driven emissions by 2050. We will accomplish this while supporting our customers in reaching their own clean energy goals without sacrificing reliable, affordable energy solutions. This is the right thing to do to protect our planet and limit severe weather brought on by climate change. Our goal is to create a cleaner, smarter, and more resilient energy system for all customers in central Maryland. To learn more about our Path to Clean, visit [BGE.com/PathtoClean](https://www.bge.com/PathtoClean).

## Natural Gas Safety

BGE is committed to maintaining a safe and reliable gas system, which begins with helping our customers understand the importance of natural gas safety. Gas is colorless, tasteless, and odorless in its natural state. Therefore, BGE puts mercaptan, a safety additive in natural gas, to give it a rotten egg odor and make it easier to detect. To learn more, visit [BGE.COM/GasSafety](https://www.bge.com/GasSafety).

## Ways to Detect Natural Gas



**SMELL** – mercaptan gives natural gas a distinctive smell similar to rotten eggs.



**SIGHT** – look for dead vegetation in a thriving area, bubbling groundwater, or blowing dust from a hole in the ground.



**SOUND** – a blowing or hissing sound.

**Smell natural gas? Don't wait. Get out fast and call 911 or 877.778.7798.**

BGE will check it out 24/7 at no cost to you. **Leave the premises, go at least 100 feet away,** and do not return until authorities say it is safe.

## Personalize Your Savings

A Home Energy Analysis can improve your energy-saving habits. By completing the What Uses Most survey, you will receive personalized savings tips, such as what items in your home are using the most energy and how to make changes to help you save money. Visit [BGE.COM/HomeEnergyReport](https://www.bge.com/HomeEnergyReport) to learn more.

# Help Prevent Energy Theft

---

Energy theft is both dangerous and illegal. Tampering with utility lines, meters, or other BGE equipment in any way creates unsafe conditions for building occupants and neighbors. Call the BGE Energy Theft Hotline at **800.417.0294** if you suspect a gas or electricity theft. Your call will be kept confidential.

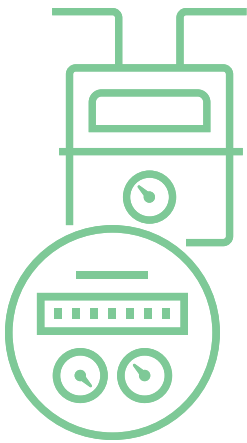
ENERGY THEFT

HOTLINE



## Meter Safety

---



Keeping your meter free of obstructions and checking the gas lines around it helps ensure accurate readings and contributes to natural gas safety. A clear area around the meter makes it possible for BGE to complete meter readings and maintenance. Today, most meters can be read remotely, but even these meters need to be kept free of obstructions. Landscaping and structures around the meter may interfere with the electronic transmission. To keep your meter accessible, make sure there is a minimum of three feet of clear space around each meter. While BGE owns and maintains the natural gas piping up to and including the gas meter, each gas customer is responsible for maintaining and monitoring all above-ground and buried pipes after the meter. If this piping is not maintained, it may corrode and leak. Be sure to periodically inspect buried gas piping located after the meter for leaks and corrosion and make necessary repairs. Plumbers who are state-certified to work on gas piping can perform maintenance and repair gas fuel piping after the meter.

## STEM Superhero — Eli Galloway, Overhead Mechanic

---

Eli Galloway is an overhead mechanic at BGE. Eli and his fellow line workers brave harsh seasonal conditions to respond at any hour of the day when emerging issues require their service. BGE line workers ensure service reliability for more than 1.25 million customers in central Maryland. These crews are responsible for nearly 9,200 miles of overhead primary electric distribution and 17,300 miles of underground primary distribution, along with 1,567 feeders and 244 substations. They also maintain close to 287,000 streetlights that illuminate roadways in the Baltimore area. To learn more about Eli and other STEM superheroes, visit [bge.com/stemsuperheroes](https://www.bge.com/stemsuperheroes).

