

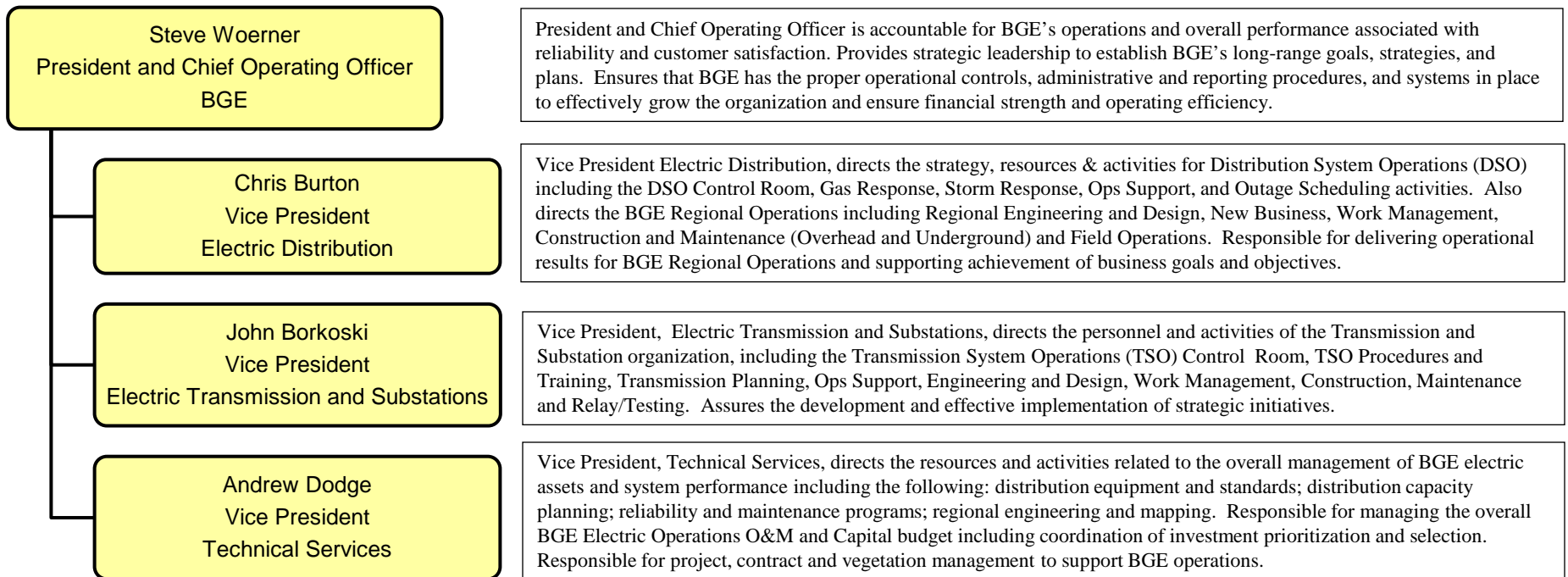


# **Exelon: BG&E, ComEd & PECO Transmission and Marketing Functions**

**Organization and Job Descriptions**

**April 29, 2015**

# BGE Executive Management



\* Transmission and Reliability Functions

Legend: Employee of Business Services Company

Last Revised on  
06/09/2014

# Electric Distribution - BGE

Chris Burton  
Vice President  
Electric Distribution

Joe Bunch  
Director  
Distribution System Operations

Director, Distribution System Operations (DSO), oversees distribution switching and control activities of the DSO Control Room, Gas Service, Gas Dispatch, Restoration Services, Ops Support, and Distribution Outage Scheduling.

Darryl Stokes  
Director  
Region 1 Northeast

Director, Region 1 Northeast, directs the strategy, resources & activities for BGE Northeast Regional Operations including Regional Engineering, New Business, Work Management, Construction and Maintenance (Overhead and Underground) and Field Operations. Responsible for delivering operational results for BGE Regional Operations and supporting achievement of business goals and objectives.

Ross Campo  
Director  
Region 2 Southwest

Director, Region 2 Southwest, directs the strategy, resources & activities for BGE Southwest Regional Operations including Regional Engineering, New Business, Work Management, Construction and Maintenance (Overhead and Underground) and Field Operations. Responsible for delivering operational results for BGE Regional Operations and supporting achievement of business goals and objectives.

Holly Lash  
Manager  
Business Support

Manager, Business Support leads divisional EIM and budgeting, metrics and related process improvements, and customer outreach efforts. Coordinates division-level initiatives, KPI, seasonal readiness and other reporting, and overall achievement of business goals and objectives.

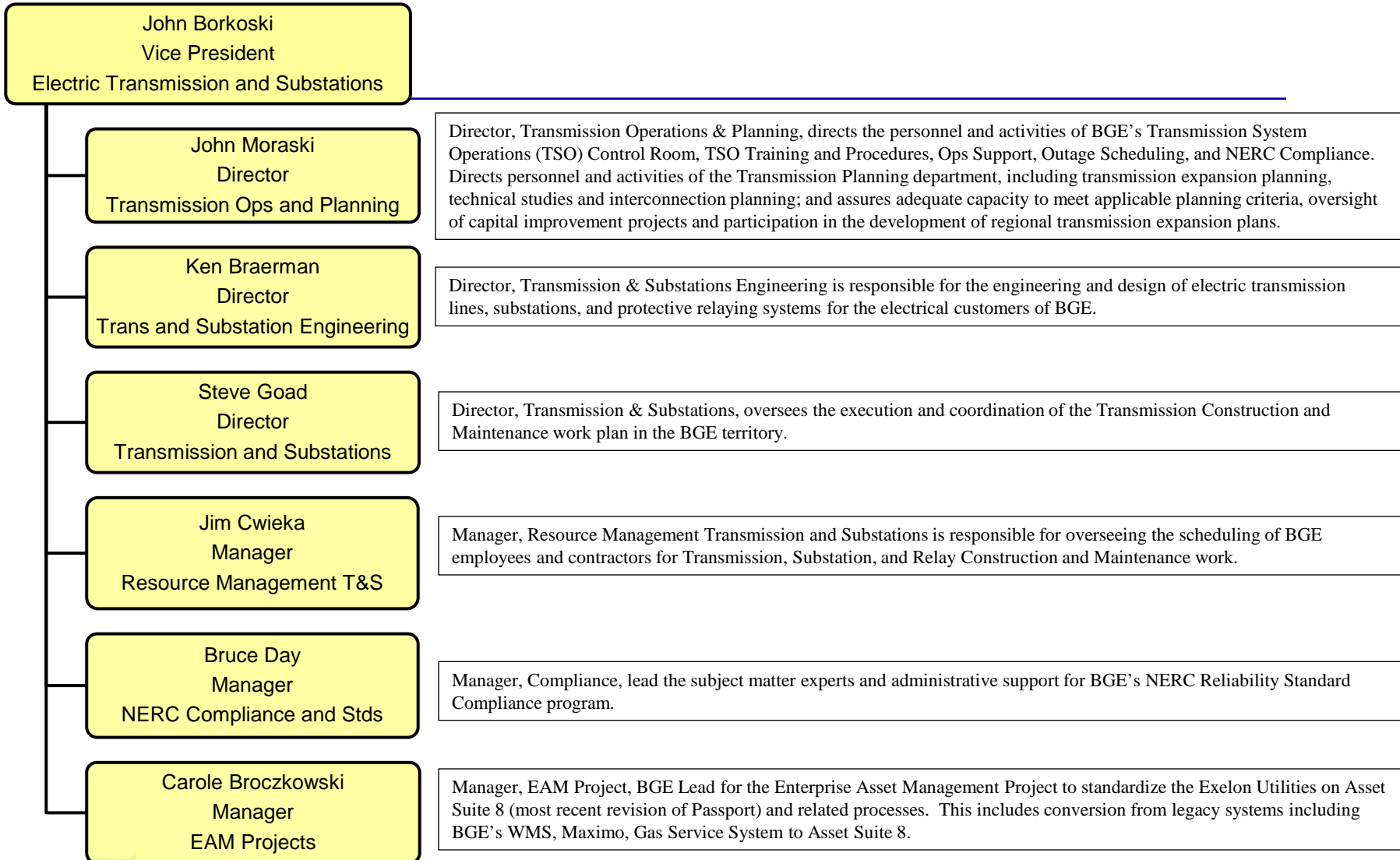


\* Transmission and Reliability Functions

Legend: Employee of Business Services Company

Last Revised on  
06/09/2014

# Transmission & Substations - BGE

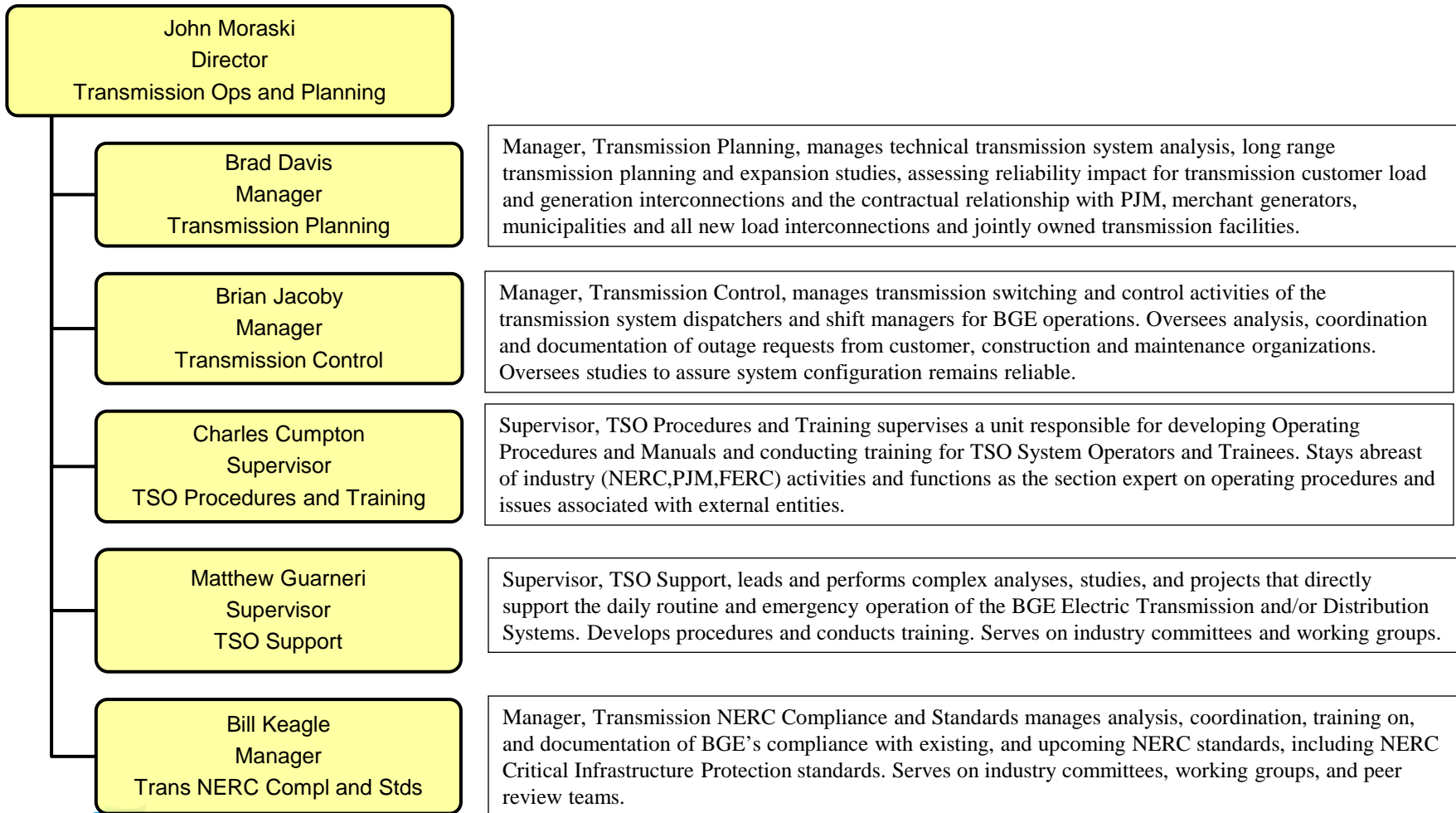


\* Transmission and Reliability Functions

Legend: Employee of Business Services Company

Last Revised on  
06/09/2014

# Transmission Operations & Planning - BGE

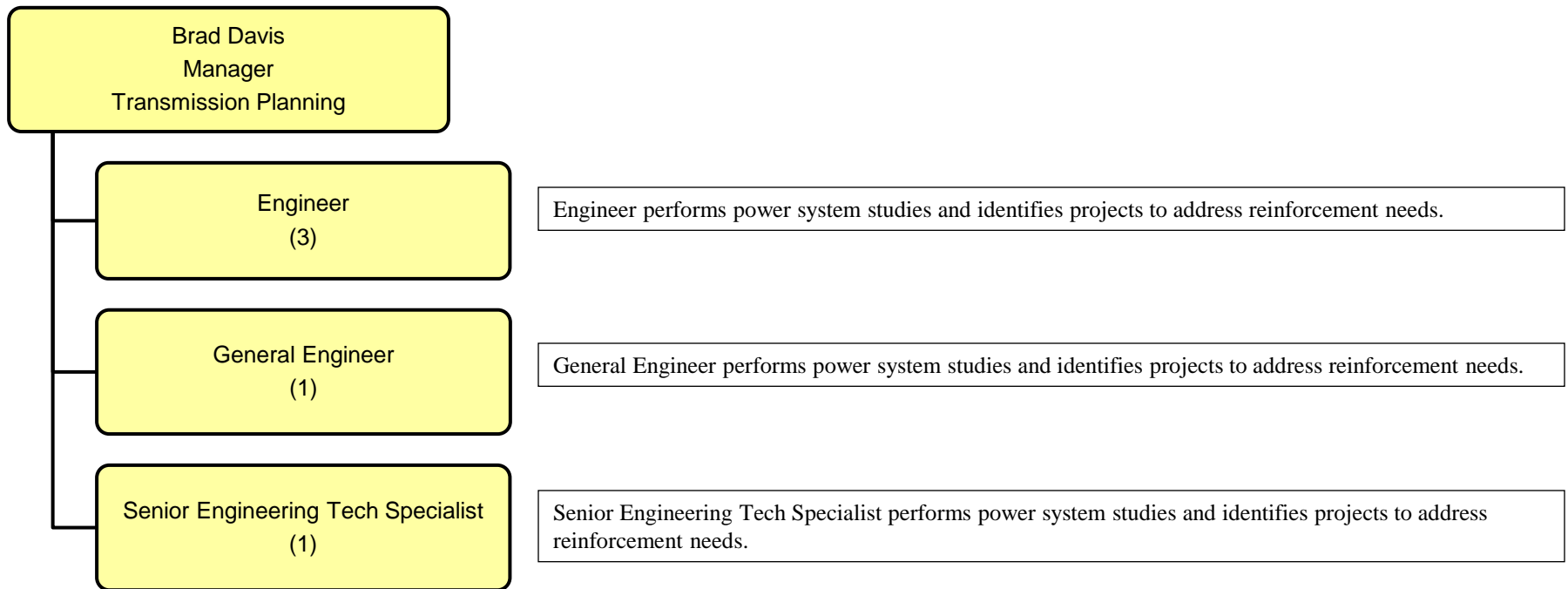


\* Transmission and Reliability Functions

Legend: Employee of Business Services Company

Last Revised on  
09/08/14

# Transmission Operations & Planning - BGE

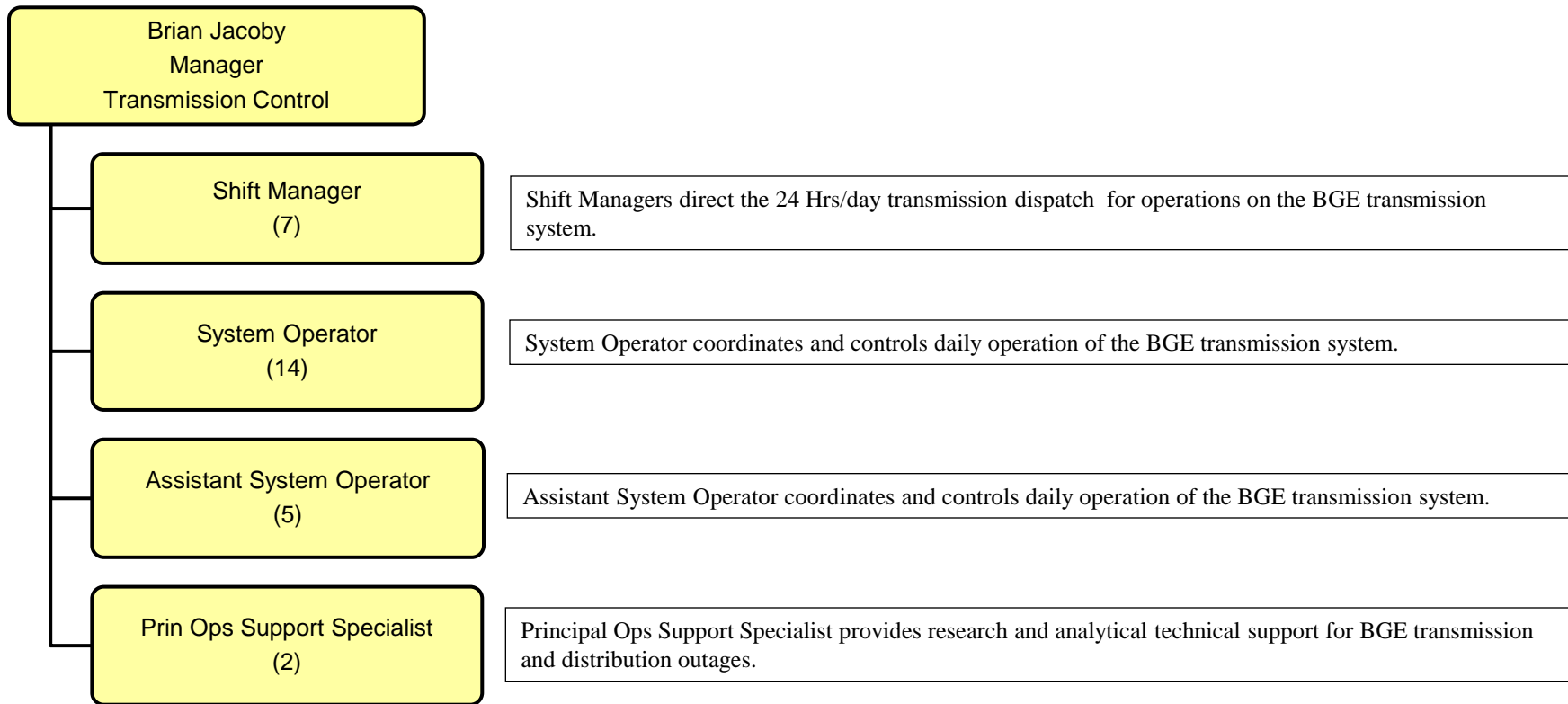


\* Transmission and Reliability Functions

Legend: Employee of Business Services Company

Last Revised on  
06/09/2014

# Transmission Operations & Planning - BGE

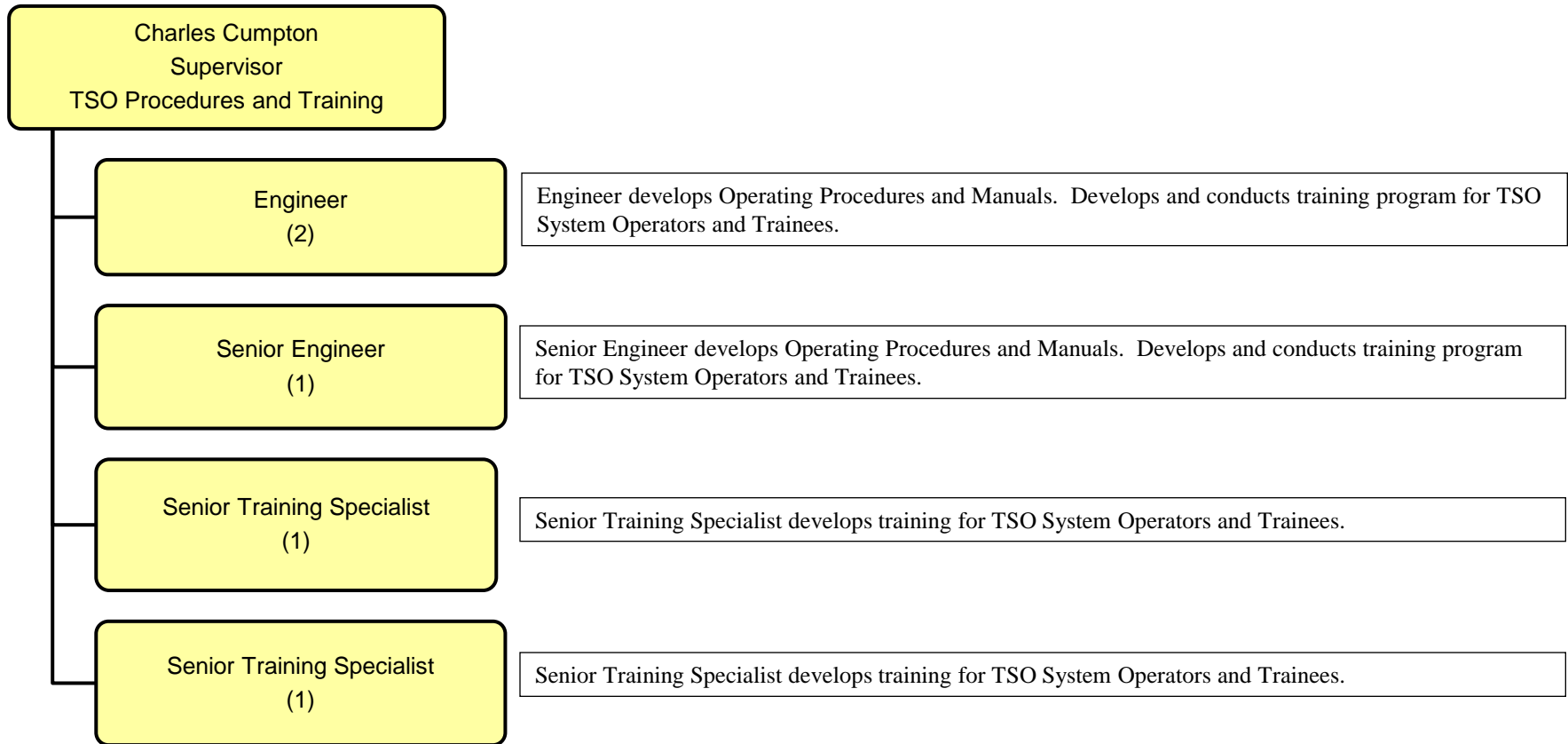


\* Transmission and Reliability Functions

Legend: Employee of Business Services Company

Last Revised on  
06/09/2014

# Transmission Operations & Planning - BGE



\* Transmission and Reliability Functions

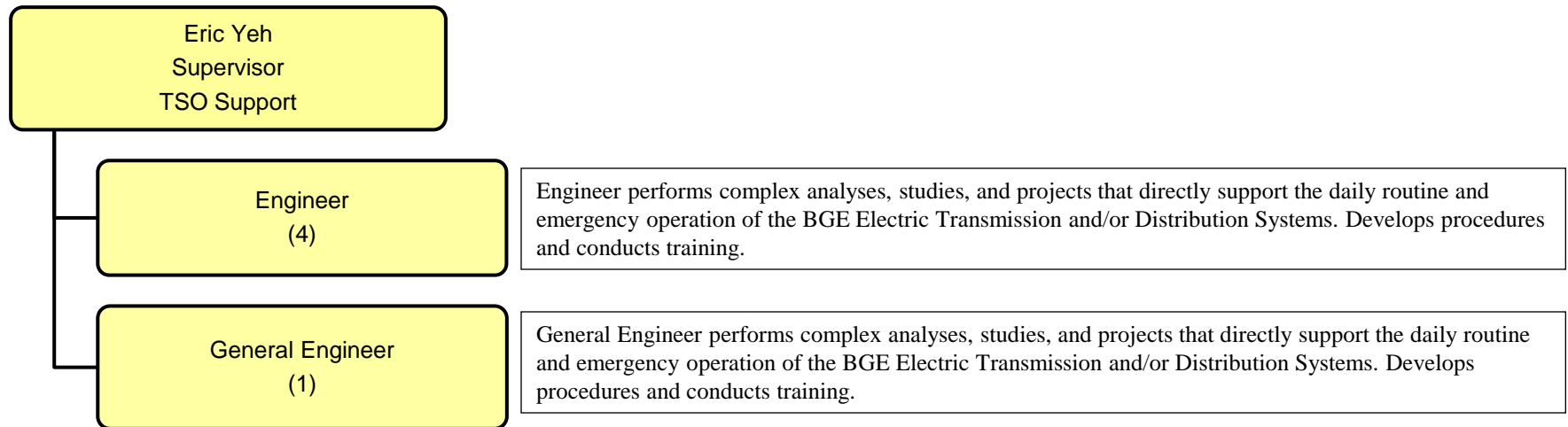
Legend: Employee of Business Services Company

Last Revised on  
06/09/2014



# Transmission Operations & Planning - BGE

---

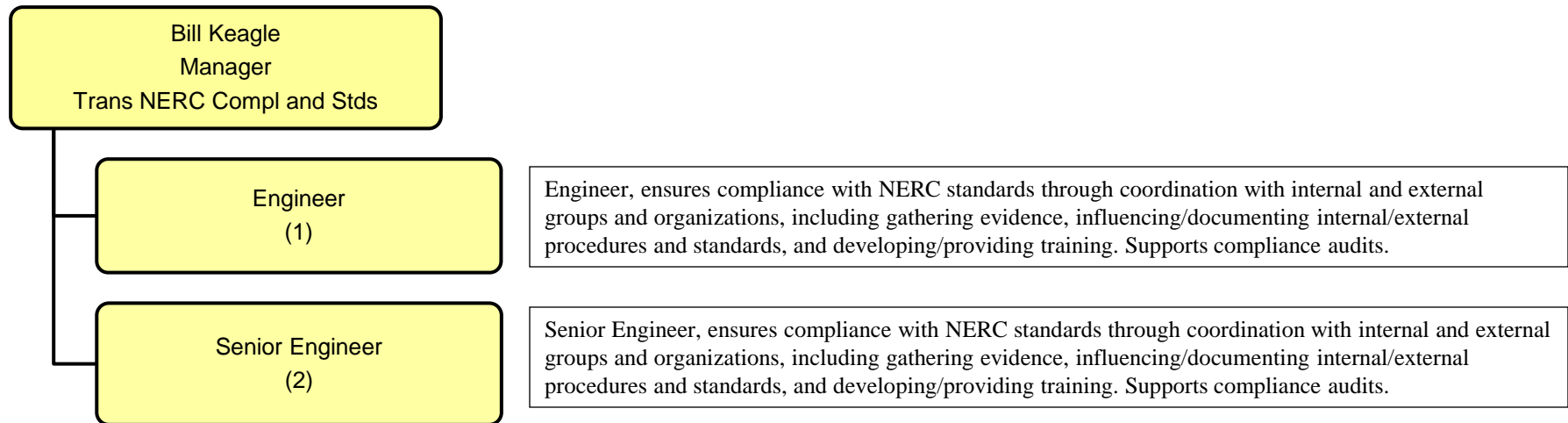


\* Transmission and Reliability Functions

Legend: Employee of Business Services Company

*Last Revised on  
06/09/2014*

# Transmission Operations & Planning - BGE

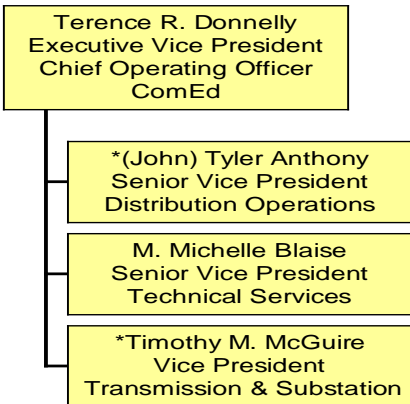


\* Transmission and Reliability Functions

Legend: Employee of Business Services Company

Last Revised on  
06/09/2014

# ComEd Executive Management



Executive Vice President and Chief Operating Officer is accountable for ComEd’s operations and overall performance associated with reliability and customer satisfaction. Provides strategic leadership to establish ComEd’s long-range goals, strategies, and plans. Ensures that ComEd has the proper operational controls, administrative and reporting procedures, and systems in place to effectively grow the organization and ensure financial strength and operating efficiency.

Senior Vice President Distribution Operations, directs the strategy, resources & activities for ComEd Regional Operations including Regional Engineering, New Business, Work Management, Construction and Maintenance (Overhead and Underground) and Field Operations (OES). Responsible for delivering operational results for ComEd Regional Operations and supporting achievement of business goals and objectives.

Senior Vice President Technical Services directs the resources and activities related to the overall management of ComEd electric assets and system performance including the following: distribution equipment and standards; distribution capacity planning; reliability and maintenance programs; regional engineering and mapping. Responsible for managing the overall ComEd Electric Operations O&M and Capital budget including coordination of investment prioritization and selection. Responsible for project, contract and vegetation management to support ComEd operations. Also responsible for Smart Grid and technology.

Vice President, Transmission and Substations, directs the personnel and activities of the Transmission and Substation organization, including Engineering and Design, Work Management, Construction, Maintenance and Relay/Testing. Assures the development and effective implementation of strategic initiatives.

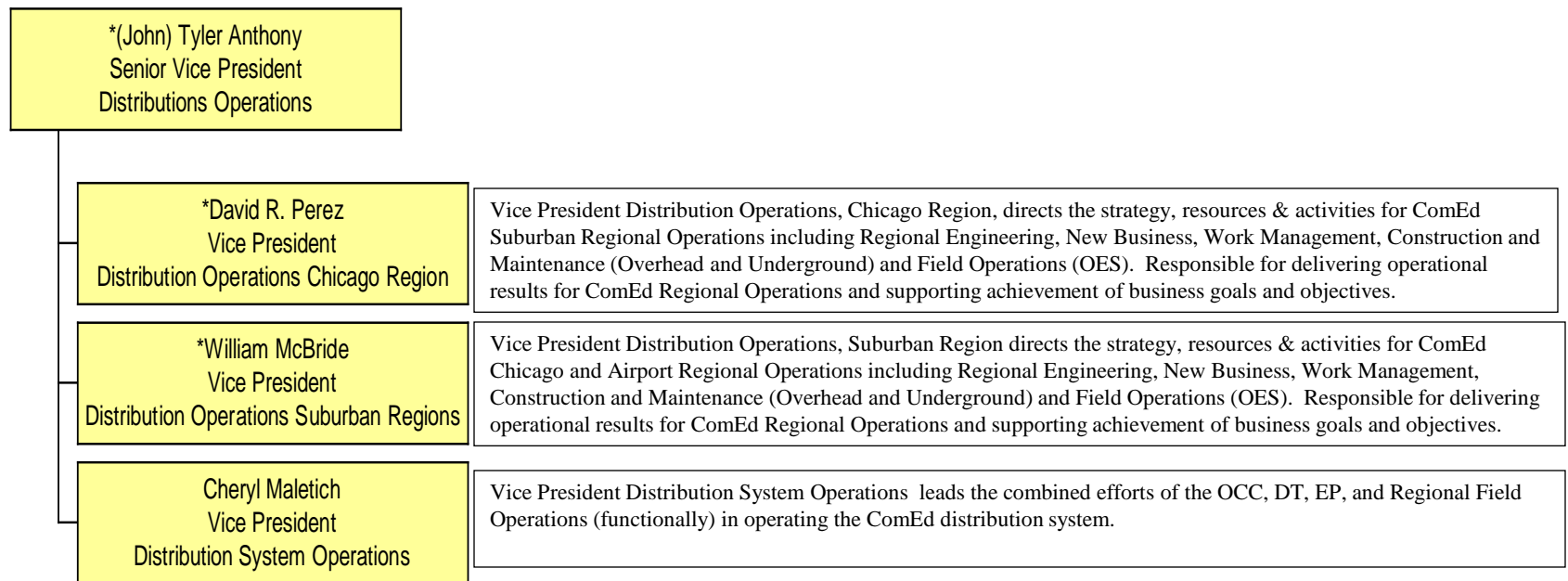


\* Transmission and Reliability Functions

Legend: Employee of Business Services Company

Last Revised on  
05/22/2014

# Distribution Operations- ComEd



\* Transmission and Reliability Functions

Legend: Employee of Business Services Company

Last Revised on  
07/08/2014

# Transmission & Substations - ComEd

\*Timothy M. McGuire  
Vice President  
Transmission & Substations

\*Gus Ponce  
Director  
Transmission & Substations

Director, Transmission & Substations, oversees the execution and coordination of the Transmission Construction and Maintenance work plan in the ComEd territory.

\*Daniel Brea  
Director  
Transmission & Substations

\*Mark Baranek  
Director  
Transmission

Director, Transmission, responsible for providing safe and reliable high voltage electrical service throughout the ComEd Transmission Service Territory.

\*Bill Gannon  
Director  
Transmission & Substation  
Engineering

Director, Transmission & Substations Engineering is responsible for the engineering and design of electric transmission lines, substations, and protective relaying systems for the electrical customers of ComEd.

\*Maureen P. Byers  
Director  
Transmission & Substation  
Work Management & Support

Director, Transmission & Substation Work Management & Support, responsible for directing employees of T&S Management, Investment Strategy, Business Support and Nuclear Planners. This includes setting strategic direction for two year budget plan, aligning multi-year work plan and budget levels.

\*Thomas W. Leeming  
Director  
Transmission Operations &  
Planning

Director, Transmission Operations & Planning, directs the personnel and activities of ComEd's Transmission Planning department, including transmission expansion planning, technical studies and interconnection planning; and assures adequate capacity to meet applicable planning criteria, oversight of capital improvement projects and participation in the development of regional transmission expansion plans. Oversees and directs interface with interconnected third parties and joint owners of transmission facilities.

\*Bruce Krawczyk  
Manager  
Compliance

Manager, Compliance, lead the subject matter experts and administrative support for ComEd's NERC Reliability Standard Compliance program.

\*Tun Chow  
Manager  
Relay

Manager, Relay, develops and maintains relay protection, SCADA and communication design practices, construction standards and material specifications. Responsible for the selection of relay protection and communication equipment. Provides technical expertise on relay protection, SCADA and communication standards and specifications to ComEd.

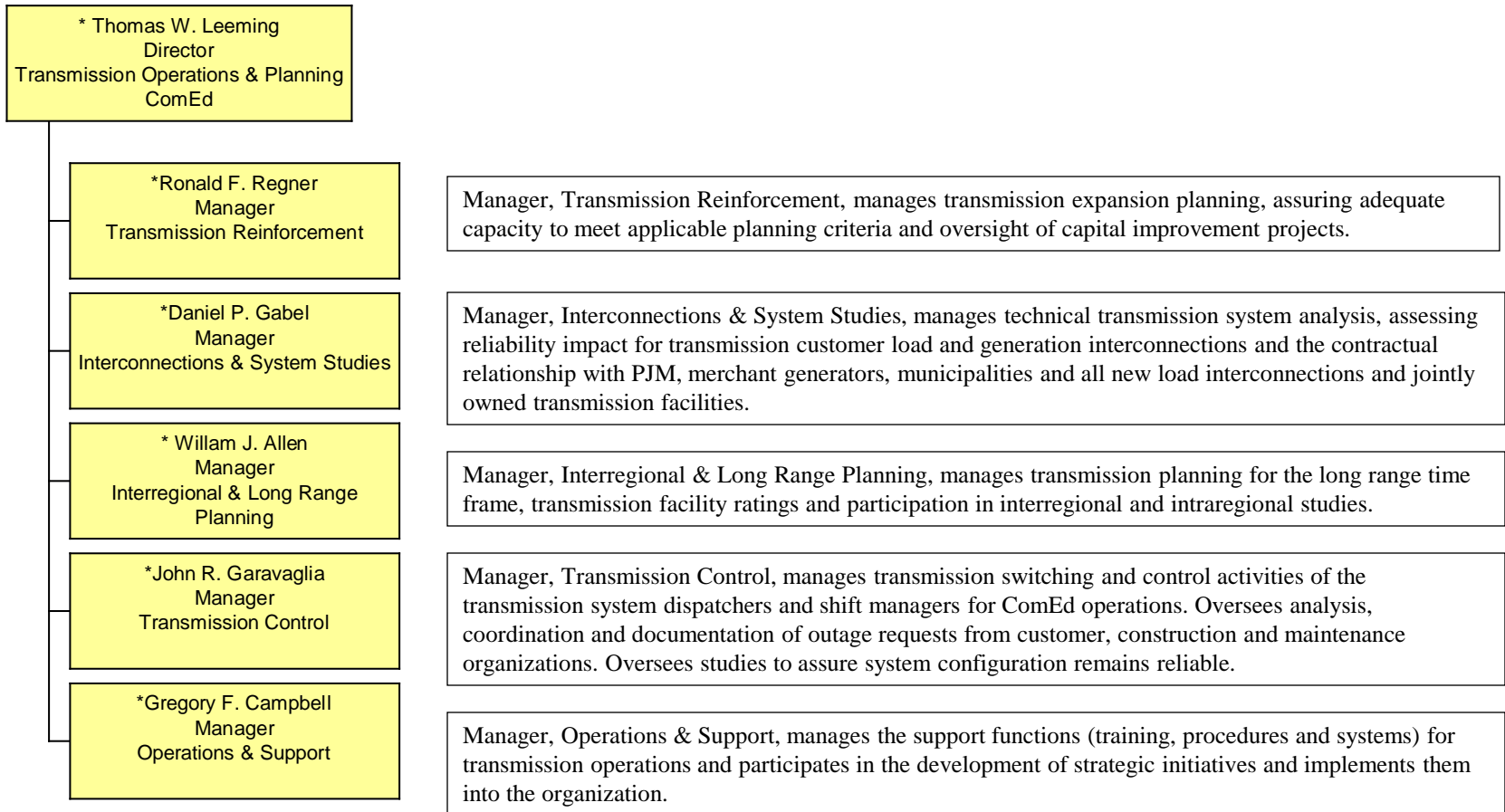


\* Transmission and Reliability Functions

Legend: Employee of Business Services Company

Last Revised on  
01/16/2015

# Transmission Operations & Planning - ComEd



\* Transmission and Reliability Functions

Legend: Employee of Business Services Company

Last Revised on  
04/29/15

# Transmission Operations & Planning - ComEd

\*Ronald F. Regner  
Manager  
Transmission Reinforcement  
ComEd

\*Principal Engineer  
(1)

\*Senior Engineer  
(3)

\*General Engineer  
(3)

\* Associate Engineer  
Tech Specialist  
(1)

Principal Engineer performs studies in their area of expertise (transmission ratings or transmission planning).

Senior Engineer performs power system studies, identifies projects to address reinforcement needs and determines transmission facility ratings.

General Engineer performs power system studies, identifies projects to address reinforcement needs and determines transmission facility ratings.

Engineer performs engineering studies and documents the results of these studies under the supervision of a Senior Engineer. Studies include power flow studies, voltage stability studies and transient stability studies.

Associate Engineer Technical Specialist performs drafting, database maintenance, and other miscellaneous duties.

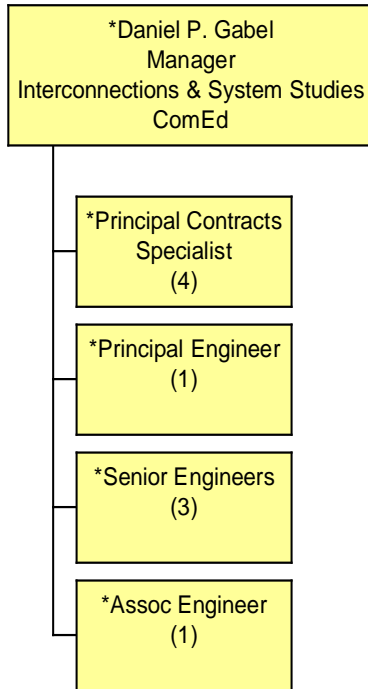


\* Transmission and Reliability Functions

Legend: Employee of Business Services Company

Last Revised on  
07/08/2014

# Transmission Operations & Planning - ComEd



Principal Contracts Specialists are the point of contact for all IPPs, manage the regulatory interconnection requirements of the OATT negotiate all contracts, manage billing, collection and credit risk. Provide oversight of all project costs, in-service dates, coordinate all transmission maintenance with plants and manage right of way and real estate issues.

Principal Engineer leads and directs special studies.

Senior Engineers performs special studies.

Assoc Engineer performs engineering studies and documents the results of these studies under the supervision of a Senior Engineer. Studies include power flow studies, voltage stability studies and transient stability studies.



\* Transmission and Reliability Functions

Legend: Employee of Business Services Company

*Last Revised on*  
04/29/15



# Transmission Operations & Planning - ComEd

William Allen  
Manager  
Interregional & Long Range Planning  
ComEd

\*Principal Engineer  
(1)

\*Engineer  
(4)

Principal Engineer serves as the lead engineer, performs power system studies, identifies projects to address reinforcement needs, and determines transmission facility ratings.

Engineer performs power system studies, identifies projects to address reinforcement needs, participates in interregional and intraregional studies, and determines transmission facility ratings.

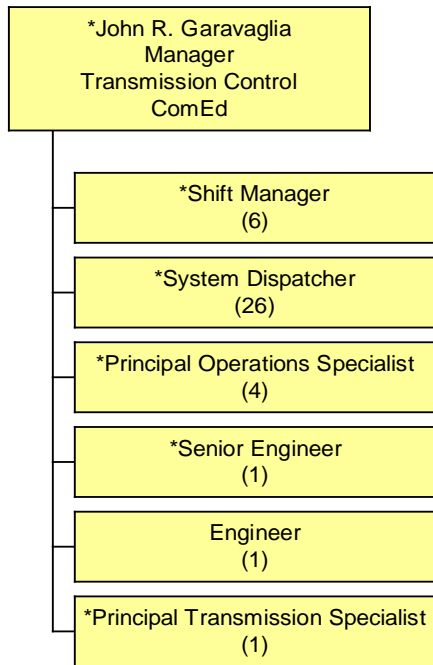


\* Transmission and Reliability Functions

Legend: Employee of Business Services Company

Last Revised on  
07/23/2014

# Transmission Operations & Planning - ComEd



Shift Managers direct the 24 Hrs/day transmission dispatch for operations on the ComEd transmission system.

System Dispatchers coordinate and control daily operation of the ComEd transmission system.

Principal Operations Specialists analyze requests from customer, construction and maintenance organizations and coordinates, prepares and documents orders for outages. Performs studies to assure system configuration remains reliable.

Senior Engineer provides research, analytical, technical support, design improvement recommendations and documentations for control area and transmission dispatch functions and systems. Performs studies to assure system configuration remains reliable. Analyzes requests from customer, construction and maintenance organizations and coordinates, prepares and documents orders for outages.

Principal Transmission Specialist provides research, analytical technical support, design improvement recommendations and documentation for control area and transmission dispatch functions and system and oversee the implementation of strategic initiatives into the organization.



\* Transmission and Reliability Functions

Legend: Employee of Business Services Company

Last Revised on  
12/08/14

# Transmission Operations & Planning - ComEd

\*Gregory F. Campbell  
Manager  
Operations & Support  
ComEd

\*Principal Engineer  
(1)

Principal Engineer provides research, analytical technical support, design improvement recommendations and documentation for control area and transmission dispatch functions and system and oversee the implementation of strategic initiatives into the organization.

\*General/Senior Engineer  
(2)

General / Senior Engineer provides research, analytical technical support, design improvement recommendations and documentation for control area and transmission dispatch functions and systems.

\*Principal Compliance Specialist  
(1)

Principal Compliance Specialist develops and manages NERC compliance for Transmission Operations. Developments and maintains all organization policies and procedures.

\*Principal Operations Support Specialist  
(3)

Principal Operations Support Specialist develops, maintains and conducts training for all Transmission Operations personnel.



\* Transmission and Reliability Functions

Legend: Employee of Business Services Company

*Last Revised on*  
01/16/15

# Transmission Operations & Planning - PECO

\*David W. Weaver  
Director  
Transmission Operations & Planning  
PECO

\*Ronald E. Schloendom  
Manager  
Transmission Control

\*Iris Boci  
Manager  
Transmission Planning

\*Principal Operations Support Specialist  
(1)

\*Engineer  
(2)

Manager, Transmission Control, manages transmission switching and control activities of the transmission system dispatchers and shift managers for PECO operations. Oversees analysis, coordination and documentation of outage requests from customer, construction and maintenance organizations. Oversees studies to assure system configuration remains reliable.

Manager, Transmission Planning, ensures the development of system plans to meet planning standards for system adequacy and security, meet system performance objectives, and meet the needs of transmission system customers. Direct the personnel and activities of the Transmission Planning engineers, including steady state and dynamic analyses that describe the interaction between Exelon's transmission network and various user interfaces with the network. Direct development of planning studies that define the thermal and reactive support requirements for the transmission system.

Principal Operations Support Specialist develops, maintains and conducts training for all Transmission Operations personnel. Develops and maintains all organization policies and procedures.

Engineer provides research, analytical, technical support, design improvement recommendations and documentations for control area and transmission dispatch functions and systems. Performs studies to assure system configuration remains reliable. Analyzes requests from customer, construction and maintenance organizations and coordinates, prepares and documents orders for outages.

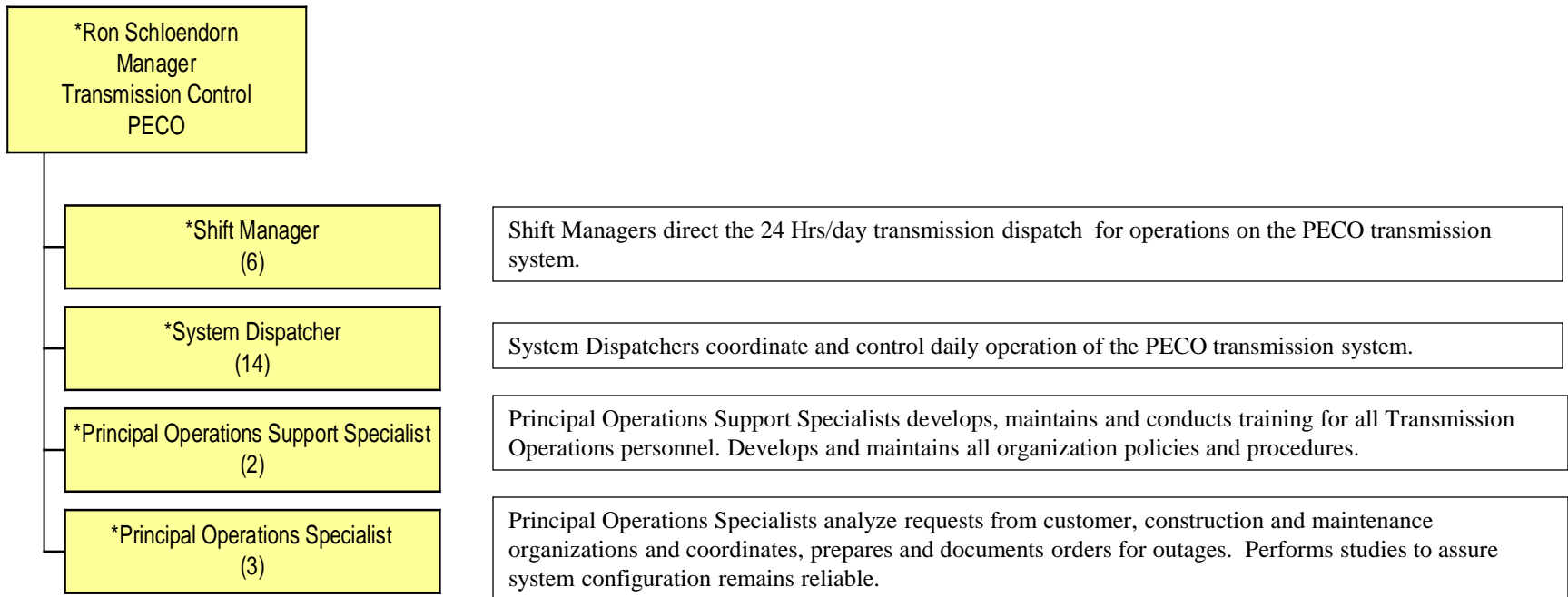


\* Transmission and Reliability Functions

Legend: Employee of Business Services Company

Last Revised on  
02/25/2013

# Transmission Operations & Planning - PECO

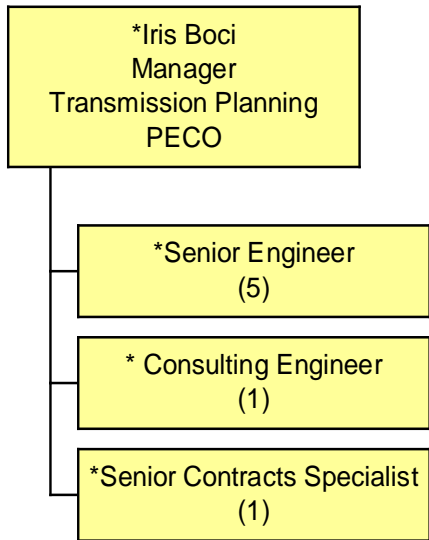


\* Transmission and Reliability Functions

Legend: Employee of Business Services Company

Last Revised on  
09/17/2012

# Transmission Operations & Planning - PECO



Senior Engineer performs power system studies to identify and initiate transmission upgrades required to meet NERC, RFC, PJM and Exelon planning criteria and standards. Develops transmission models for PJM and RFC. Determine end to end transmission facility ratings. Verifies feasibility and system impact studies for transmission customer interconnection requests.

Consulting Engineer provides technical guidance and instruction to Transmission Planning organization. Participates in industry working groups and committees. Recommends company positions on PJM working groups/committees and FERC Filings.

Senior Contracts Specialist is the point of contact for all IPPs, manages the regulatory interconnection requirements of the OATT, negotiates all contracts, manages billing, collection and credit risk. Provides oversight of all project costs, in-service dates, coordinates all transmission maintenance with plants and manages right of way and real estate issues.



# Technical Services - PECO

\*John E. McDonald  
Vice President  
Technical Services  
PECO

Vice President, Technical Services, PECO oversees the Transmission and Substation (T&S), Central Engineering (Standards, Reliability Programs and Capacity Planning), Project Management and Contract Management, Vegetation Management, Investment Strategy and Business Support including Application Support (AISP) organizations.

J. Earl Coffman  
Director  
Project & Contract  
Management

Director, Project and Contract Management, is responsible for providing overall project management and controls for PECO's larger projects and to manage the utility line clearance and grounds maintenance programs.

J. Earl Coffman  
Director  
Engineering

Director, Engineering, is responsible for providing reliability and regulatory reports as well as issue plans and maintenance programs to ensure the distribution system meets capacity expansion and reliability requirements. Single point of contact for audits associated with system performance and reliability. Also responsible for equipment standards as well as maintenance inspection for the distribution system to verify material conditions and develop distribution maintenance programs.

\*David W. Weaver  
Director  
Transmission Operations  
& Planning

Director, Transmission Operations & Planning, directs the personnel and activities of PECO's Transmission Planning department, including transmission expansion planning, technical studies and interconnection planning; and assures adequate capacity to meet applicable planning criteria, oversight of capital improvement projects and participation in the development of regional transmission expansion plans. Oversees and directs interface with interconnected third parties and joint owners of transmission facilities.



\* Transmission and Reliability Functions

Legend: Employee of Business Services Company

Last Revised on  
05/02/2013

# Electric Operations - PECO

---

\*John E. McDonald  
Vice President  
Technical Services  
PECO

\*Drew Thomas Davis  
Director  
Transmission &  
Substations

Vice President, Electric Operations leads the Electric Operations Organization in providing safe and reliable electric service. They direct the personnel and activities of the Distribution Maintenance & Construction, Distribution System Operations and Transmission and Substations departments. In addition, they provide leadership and guidance to the strategic planning process and assures focus and attainment of business goals and objectives. Overall responsibility for employee development, safety, reliability, customer satisfaction and financial performance.

Director, Transmission and Substations, is responsible for the engineering, construction, maintenance, modification, repair, and restoration of electric transmission lines, substations, and protective relaying systems for the electrical customers of PECO.



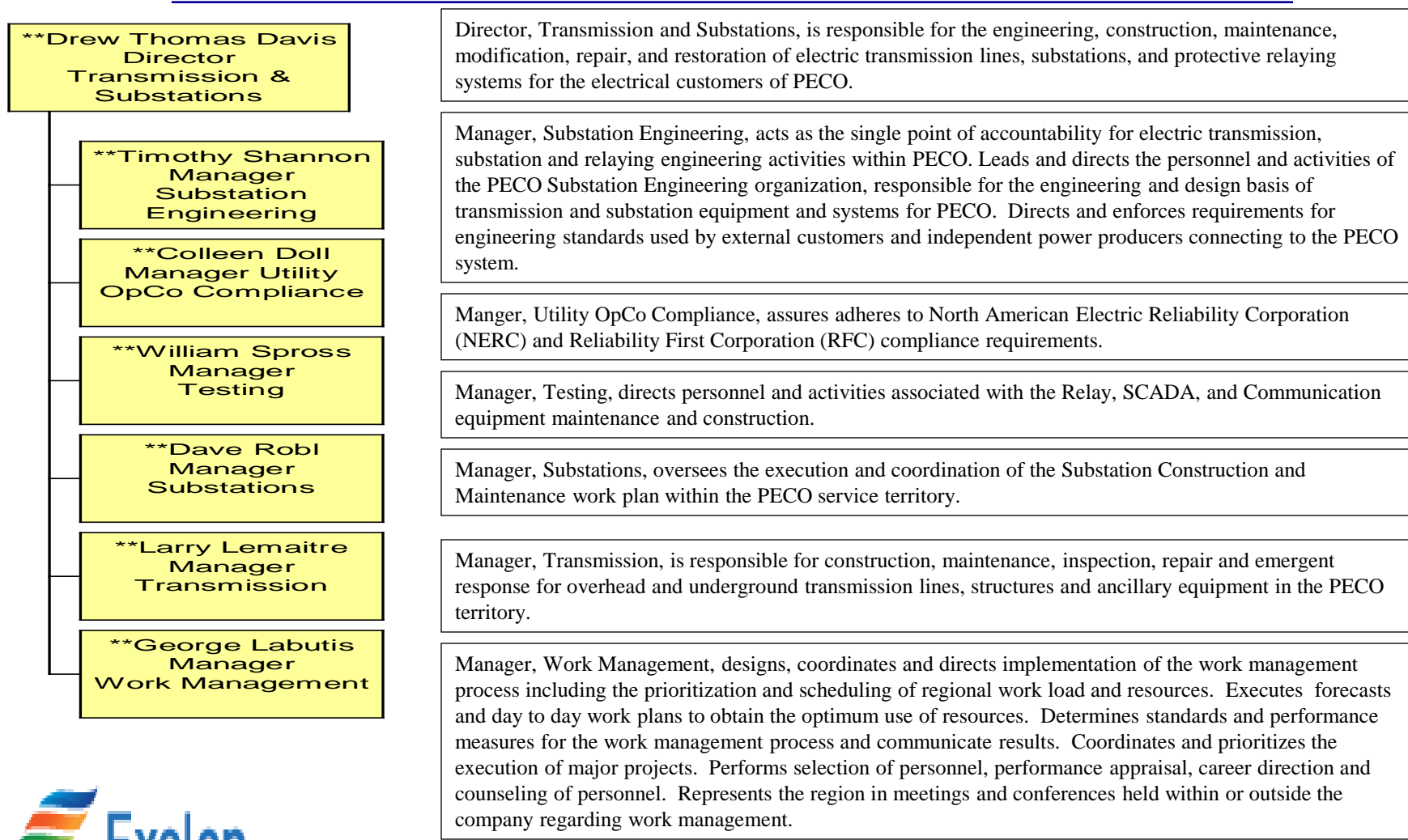
\* Transmission and Reliability Functions

Legend: Employee of Business Services Company

Last Revised on  
04/14/14



# Transmission & Substations - PECO



\* Transmission and Reliability Functions

Legend: Employee of Business Services Company

Last Revised on  
04/29/15

# Transmission Strategy and Compliance

Susan O. Ivey  
Vice President  
Transmission Strategy and Compliance

Jennifer T. Sterling  
Director  
NERC Compliance Program

Director, NERC Compliance Program directs the resources and activities of the Exelon NERC Compliance Program group. Functions include: NERC/RRO Interface and Business Planning & Special Projects. Oversees the interface with external transmission and reliability organizations, including NERC and the Regional Reliability Organizations and represents Exelon in senior industry committees. Ensures compliance with NERC/RRO standards. Manages Transmission Strategy & Compliance business planning, management model, and budget processes.

Pulin Shah  
Manager  
Transmission Strategy

Manager, Transmission Strategy manages the personnel and activities of the Transmission Strategy group. Manages negotiations with PJM and the Transmission Owner Administrative Committee to optimize transmission asset management, planning, operations and maintenance practices with PJM and transmission owners. Develops short and long-term regulatory and business strategies for optimizing transmission assets and revenue recovery for BGE, PECO and ComEd. Assists with the prosecution and settlement of wholesale transmission rate design and rate case proceedings for ComEd and PECO before FERC. Leads the Exelon Transmission Operations and Planning Peer Group and manages the Exelon Transmission Rates Council. Manages the Exelon PJM Issues Management process. Represents Exelon on PJM committees and industry forums.

Robert J. Johnson  
Director of Physical Security  
Programs & Compliance

Director of Physical Security Programs & Compliance is responsible for the development and implementation of a comprehensive physical security strategy across Exelon's utility businesses, positioning BGE, ComEd and PECO to reduce risks, preempt adverse events and mitigate losses from the various threats that can impact our industry.

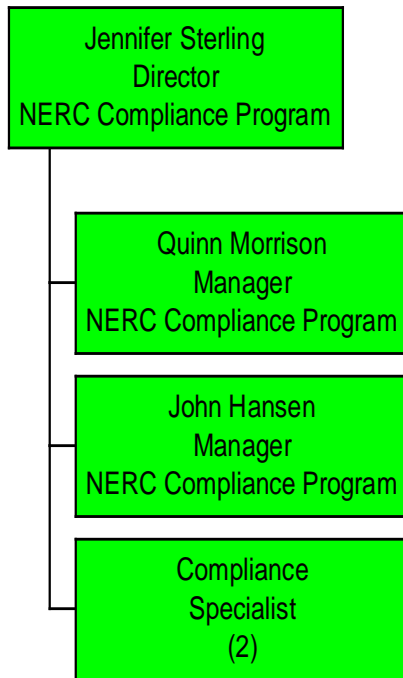


\* Transmission and Reliability Functions

Legend: Employee of Business Services Company

Last Revised on  
12/05/2014

# Transmission Strategy and Compliance



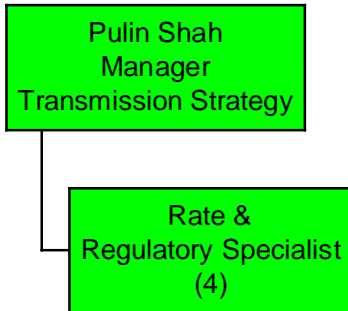
Manager, NERC Compliance Program – Manager, NERC Compliance Program manages the resources and activities of the non-CIP or CIP Reliability Standard Groups. Supports the interface with external transmission and reliability organizations, including NERC and the Regional Reliability Organizations (RROs) and represents Exelon in industry committees and task forces. Ensures compliance with NERC/RRO standards through coordination with the applicable Exelon Business Units.

Compliance Specialists ensure compliance with NERC and Regional Reliability Organization (RRO) reliability standards. Perform tasks pursuant to the Exelon NERC Reliability Standards compliance programs and procedures. Track and report on key compliance activities, participate in NERC and RRO task forces and committees for the development and implementation of new existing reliability standards. Represent Exelon at industry forums and FERC, NERC and RRO proceedings. Coordinates compliance tasks through coordination with the applicable Exelon Business Units.



# Transmission Strategy and Compliance

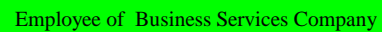
---



Rate & Regulatory Specialists (1) provides expertise on transmission rates and regulatory matters, (2) develops and maintains relationships with regional transmission organizations, interconnected entities, reliability organizations and other transmission owners, (3) participates in the development of Exelon Positions on transmission policy, (4) conducts analysis and prepared filings, testimony, and supporting materials to support transmission rates and revenue recovery, (5) analyzes, develops, implements and monitors strategic initiatives related to the transmission system, including the recovery of revenue requirements and (6) monitors and disseminates information about FERC developments that impact Transmission Operations and Planning's business operations.



\* Transmission and Reliability Functions

Legend:  Employee of Business Services Company

Last Revised on  
06/07/2012

# FERC Compliance Team

## Chief Compliance Officer for Exelon Corporation

Darryl Bradford, SVP and General Counsel, Exelon

## Exelon's Functional Area Officers

### Exelon Utilities

Susan Ivey, Vice President Transmission Strategy and Compliance

### Marketing / Commercial Organizations

Paul R. Bonney, Senior Vice President and Deputy General Counsel  
Regulatory Wholesale and Retail

## Exelon's Business Unit Compliance Contacts

[TBD], Manager FERC Compliance & Assistant General Counsel –  
**Business Services / Corporate Center** (Project Lead)

Michael Van Horn, Fossil Duty Officer,

**Exelon Generation – Exelon Power**

Michael Korchynsky, Jr., Operations Specialist,

**Exelon Generation – Exelon Nuclear**

Jennifer Walker, Principal Rates and Regulatory Specialist,

**PECO**

[TBD], Regulatory Compliance & Performance Standards, **ComEd**

Katie Banik, Principal Regulatory Specialist,  
**ComEd**

Vincenzo Franco, Assistant General Counsel,  
**Marketing Organization**

Matthew Guarneri, General Engineer,  
**BG&E**

Kristyn Kelly, Sr. Analyst, Governance, Ethics and Policies,  
**SOC Postings**

[TBD], Manager, IT Security and Compliance, Information  
Technology (FERC Compliance)

[TBD], Manager, HR Process Improvement, Human Resources  
(FERC Compliance)



\* Transmission and Reliability Functions

Legend: Employee of Business Services Company

Last Revised on  
01/16/15