

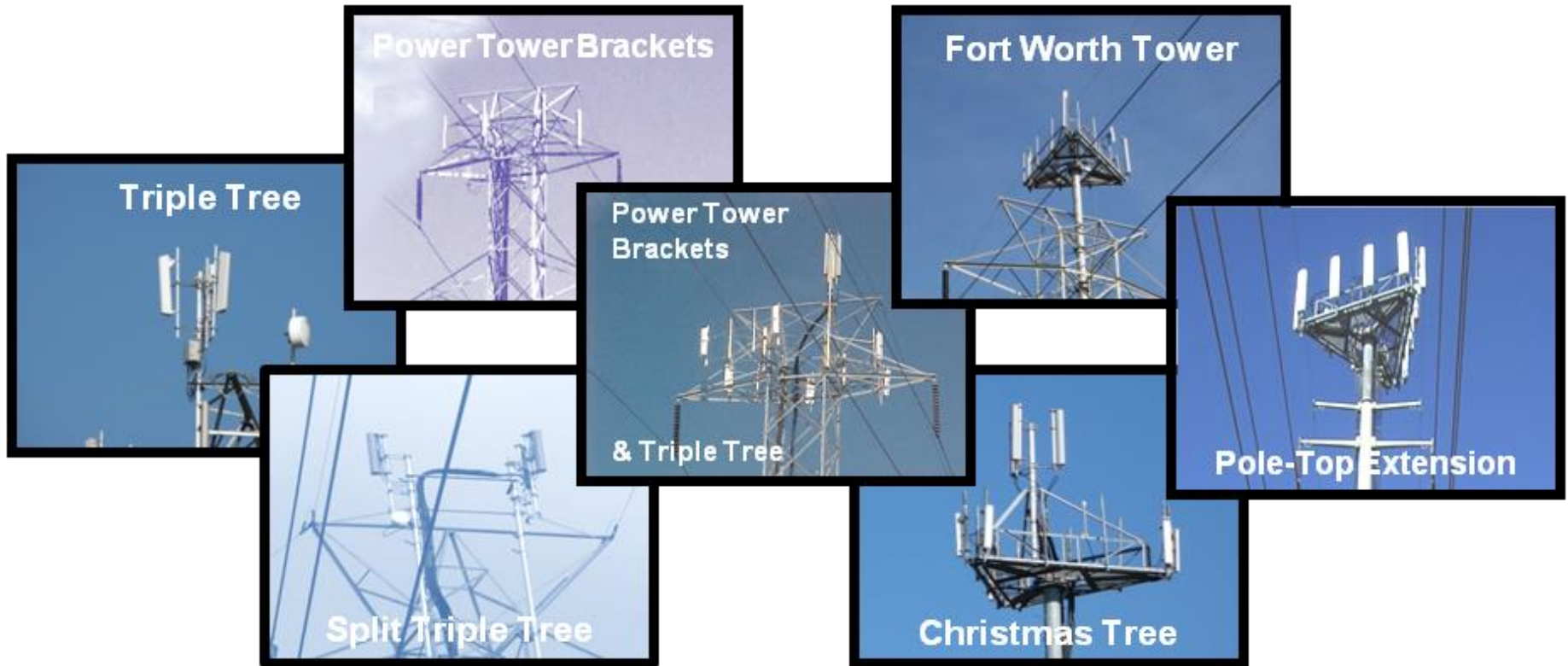
Antenna Installation Types

LightSpeed Communications



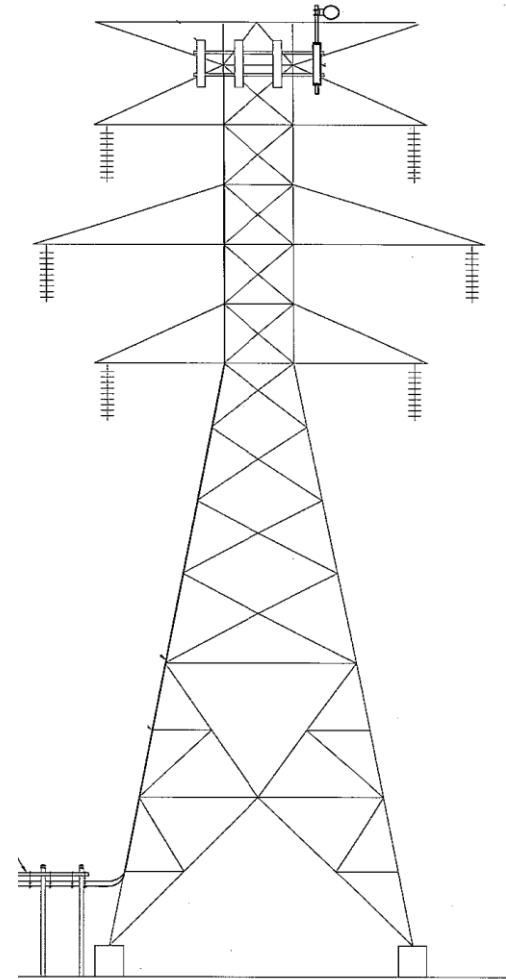
An Exelon Company

Sample Installations



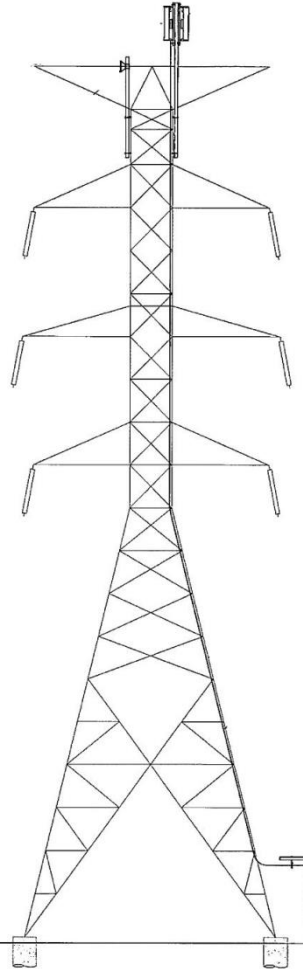
Power Tower Bracket (Standard Installation)

Accommodates a full-sectored site. No Radio Heads Allowed on Brackets.



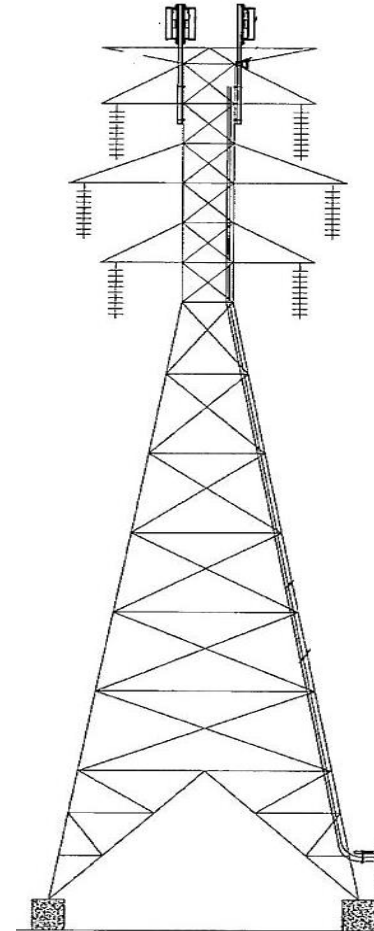
Triple Tree (Pipe-Mounted Above)

Adds height and accommodates three flush-mounted antennas.



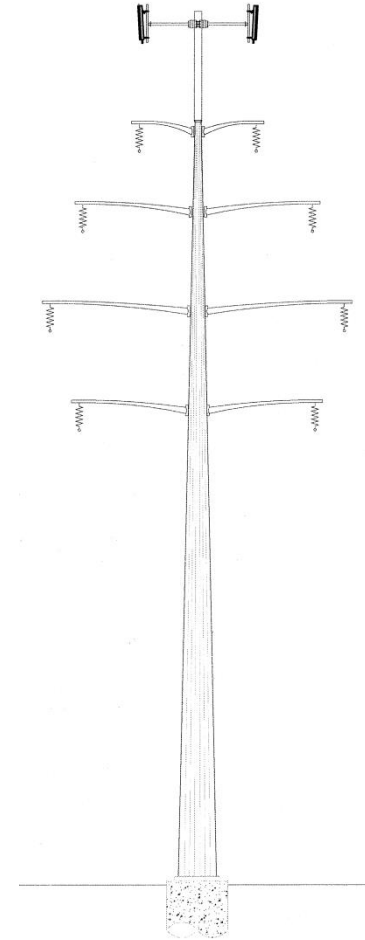
Triple Tree Split (Pipe-Mounted Above on Two Legs)

Adds height and is meant to accommodate one – two antennas per leg. Provides opportunity for future Power Mount Pole (i.e. Fort Worth Tower) installation without interference.



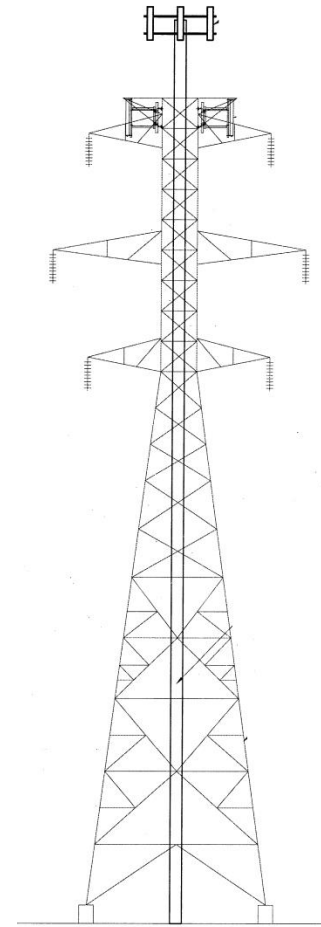
Pole Top Extension (Transmission Pole Only)

Adds height, includes a platform and accommodates a full-sectored site. Radio Heads allowed on platform.



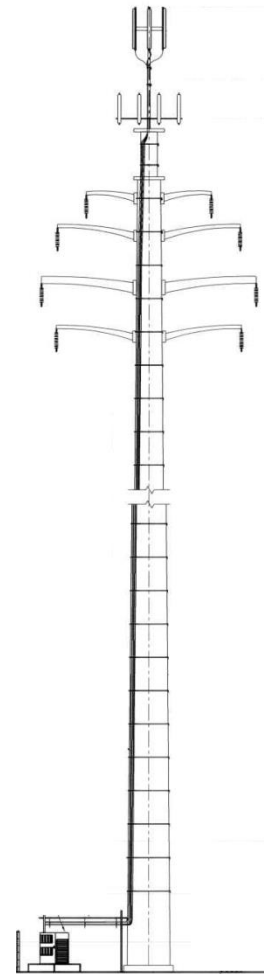
Power Mount Pole/Fort Worth Tower (Transmission Tower Only)

Adds height, includes platform and accommodates a full-sectored site. Radio Heads allowed on platform.



Christmas Tree

Adds height to existing platform installations and accommodates three flush-mount antennas.



500 KV Lines (Under-build Only)

A 35' separation is required from the bottom of the arm to the top of the antenna. These sites do not typically provide remarkable height. No Power Mount Poles/Fort Worth Towers allowed.

