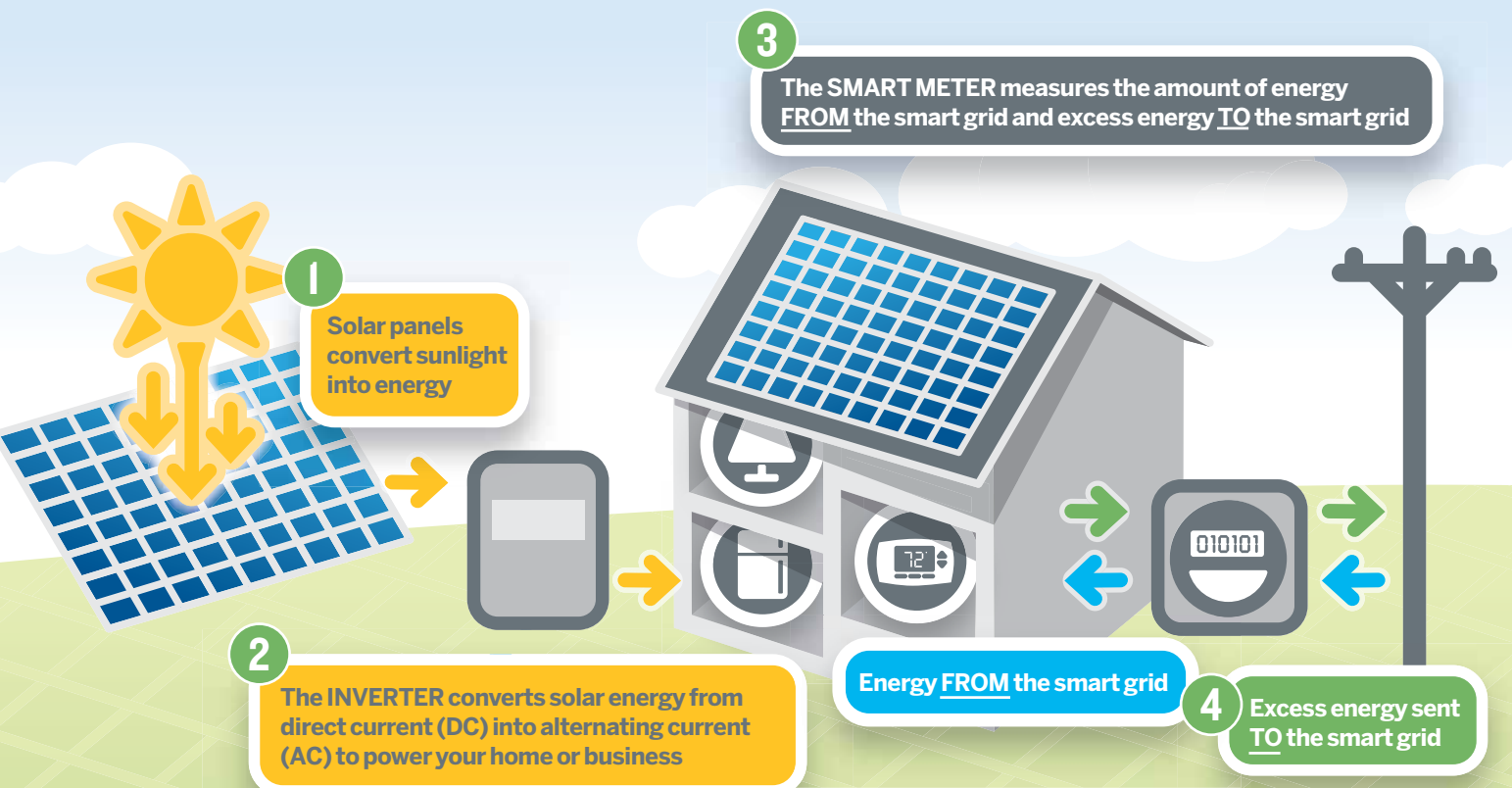


HOW NET METERING WORKS

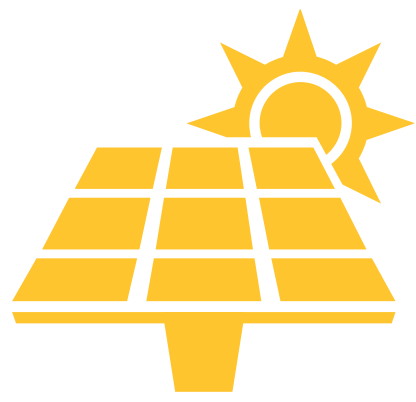


NET METERING CREDIT EXAMPLES

| | Energy Produced by Solar Panels | Total Energy Used by Customer | kWh FROM the Smart Grid | Excess kWh TO the Smart Grid |
|--|---------------------------------|-------------------------------|-------------------------|------------------------------|
| Energy Produced is <u>LESS THAN</u> Energy Used | 5 kWh | 7 kWh | 2 kWh | 0 kWh |
| Energy Produced <u>EQUALS</u> Energy Used | 5 kWh | 5 kWh | 0 kWh | 0 kWh |
| Energy Produced is <u>GREATER THAN</u> Energy Used | 5 kWh | 3 kWh | 0 kWh | 2 kWh |



We're here to help you throughout the journey.
Visit BGE.com/MyGPC



Our clean energy future.

We have a variety of resources that can help you get your solar energy system up and running. And we're here to help you through the journey!

For Answers to Frequently Asked Questions

BGE.com/MyGPC

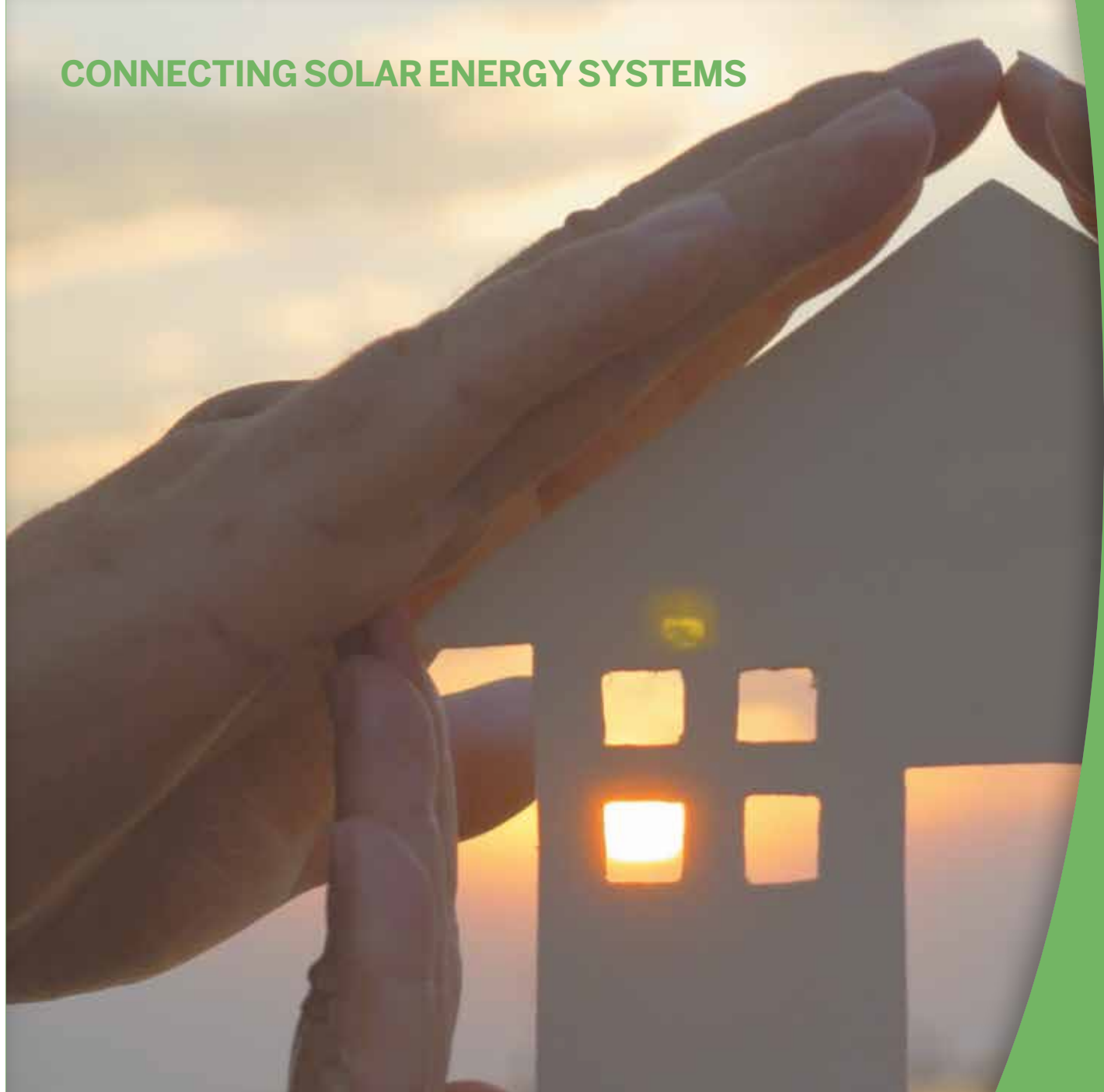
For Questions about Connection to our Smart Grid

Email: GPCTeam@bge.com



An Exelon Company

CONNECTING SOLAR ENERGY SYSTEMS



Producing your own energy?

Let BGE help you connect to the grid.



An Exelon Company

MY GREEN POWER CONNECTION

BGE.com/MyGPC

Our Clean Energy Future

Now that you've decided to generate your own energy, BGE is here to help you safely connect to the electric system.

You'll find some important information on the following pages to help you get your solar energy system up and running so that you can enjoy the many benefits of generating your own power.

Before submitting your application, please take a moment to read the following:

- The Step-by-Step Interconnection Process
- The Interconnection Process
- Important information to know before getting started
- How Net Metering Works



For answers to additional questions you might have about interconnecting to the grid, contact **BGE's My Green Power Connection** team at **800-233-1854** or email **GPCTeam@bge.com**.

Step-by-Step Connecting to BGE's Electric System

Connecting your solar energy system to the grid requires a few important steps. These are summarized below.



APPLY

1 Apply
Be sure to contact your municipality or county regarding permit requirements or ordinances covering the operation of a solar energy system. Then, with the assistance of your solar contractor, complete and submit the interconnection application and other required documentation appropriate for your project to BGE. You can submit your project information electronically at BGE.com/MyGPC.

2 Application Review
BGE will review your interconnection application to ensure your solar energy system can be safely and reliably connected to BGE's electric system. Depending on the complexity of your project, this may take up to 20 days for systems 20kW AC or less. During this time, you may receive requests to provide additional information.

3 Install Your System
Install your solar energy system after you have received written approval of your interconnection application from BGE. Your local municipality or county will inspect your solar system.

4 Final Documentation
Send in Certificate of Completion, proof of passed inspection and if Level 2-4, the Interconnection Agreement. BGE will verify and send to the net meter install team for completion in the field.

5 BGE Installs Net Meter
If the meter is located outside, the net meter will be installed without the customer needing to be present. If inside, an appointment will be scheduled for installation.

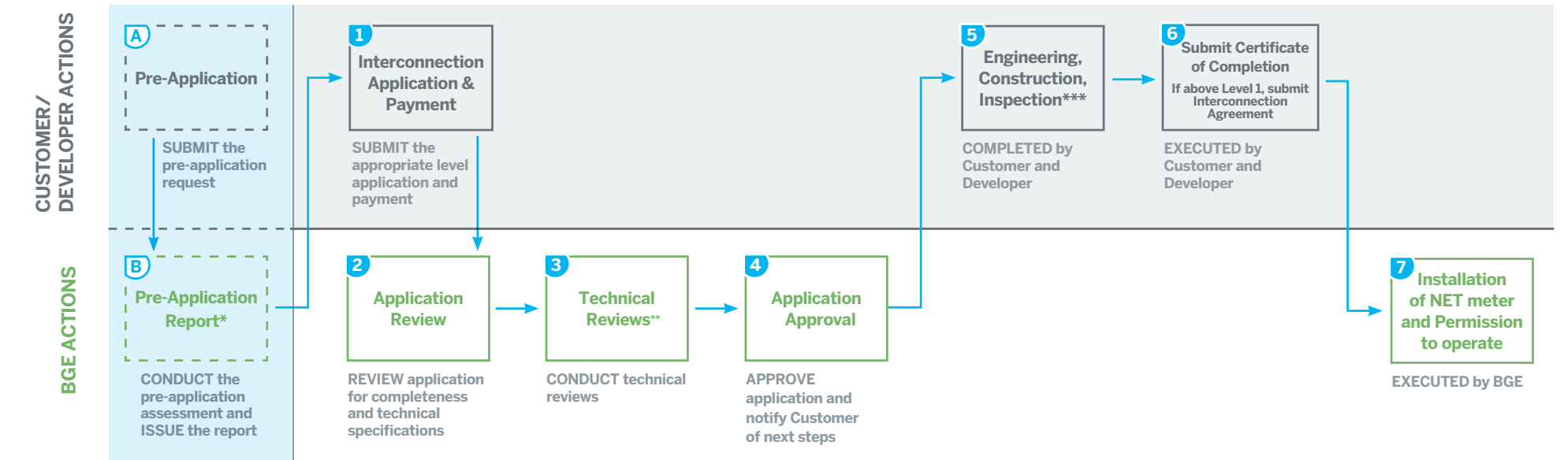
6 Operate Your System
You may begin operating your solar energy system after you received confirmation from BGE that your net meter has been installed and you have received your Permission to Operate email from BGE.



INSTALL & OPERATE

For a closer look into the process BGE follows in its review and approval of any application, along with the amount of time needed to review, see the diagrams to the right.

The Interconnection Process



* Completing these two optional steps may provide insight into the feasibility of the project.
 ** Numbers and types of technical reviews may vary by interconnection level.
 *** If required, BGE upgrades will be completed at this time.

The Interconnection Process – DURATION & FEES

Amounts listed are base fees, additional fees may apply.



* Number of business days shown is from the time BGE receives a completed application.

How long is the Interconnection Process?

Interconnection applications and processing times are classified by the size and type of renewable energy system being installed per Code of Maryland Regulations 20.50.09. The time to review and approve applications varies by level of interconnection as seen in the chart above.

Important Information to Know

- **Understand your energy use.** The solar energy system you choose should be sized to produce your energy needs, however it should not exceed 200% of your annual usage per regulations.
- **The production of your solar energy system can vary** – weather, tree cover and orientation to the direction of the sun can all affect how much energy you produce.
- To ensure your solar energy system is safely and reliably connected to the smart grid **do not operate your system without approval from BGE and your municipality.**
- **Participate in net metering and receive credits on your energy bill** when you produce more energy than you need.
- **Please remember to cancel your Budget Billing plan once your NET meter is installed to ensure your generation is credited properly.**

Visit BGE.com/MyGPC for additional FAQs.



An Exelon Company